

ARTICLE DATA CARD

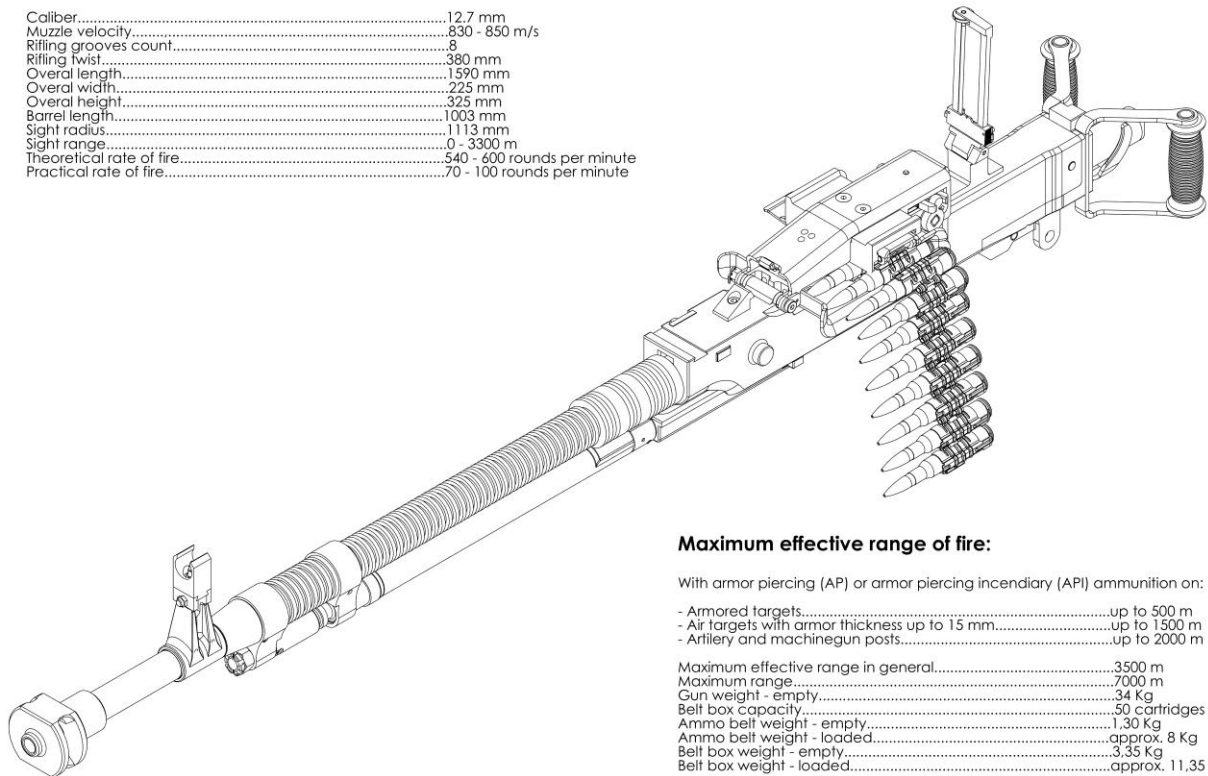
LOT HISTORY FOLDER

Munitions Item/Description:	12.7x108mm Machine Gun Model DShK-M, Machine gun with spare barrel and accessories
Drawing Number:	
Serial Number:	

Insert Drawing Here

12.7mm anti-aircraft HMG vz.14

Caliber.....	12.7 mm
Muzzle velocity.....	830 - 850 m/s
Rifling grooves count.....	8
Rifling twist.....	380 mm
Overall length.....	1590 mm
Overall width.....	225 mm
Overall height.....	325 mm
Barrel length.....	1003 mm
Sight radius.....	1113 mm
Sight range.....	0 - 3300 m
Theoretical rate of fire.....	540 - 600 rounds per minute
Practical rate of fire.....	70 - 100 rounds per minute



Maximum effective range of fire:

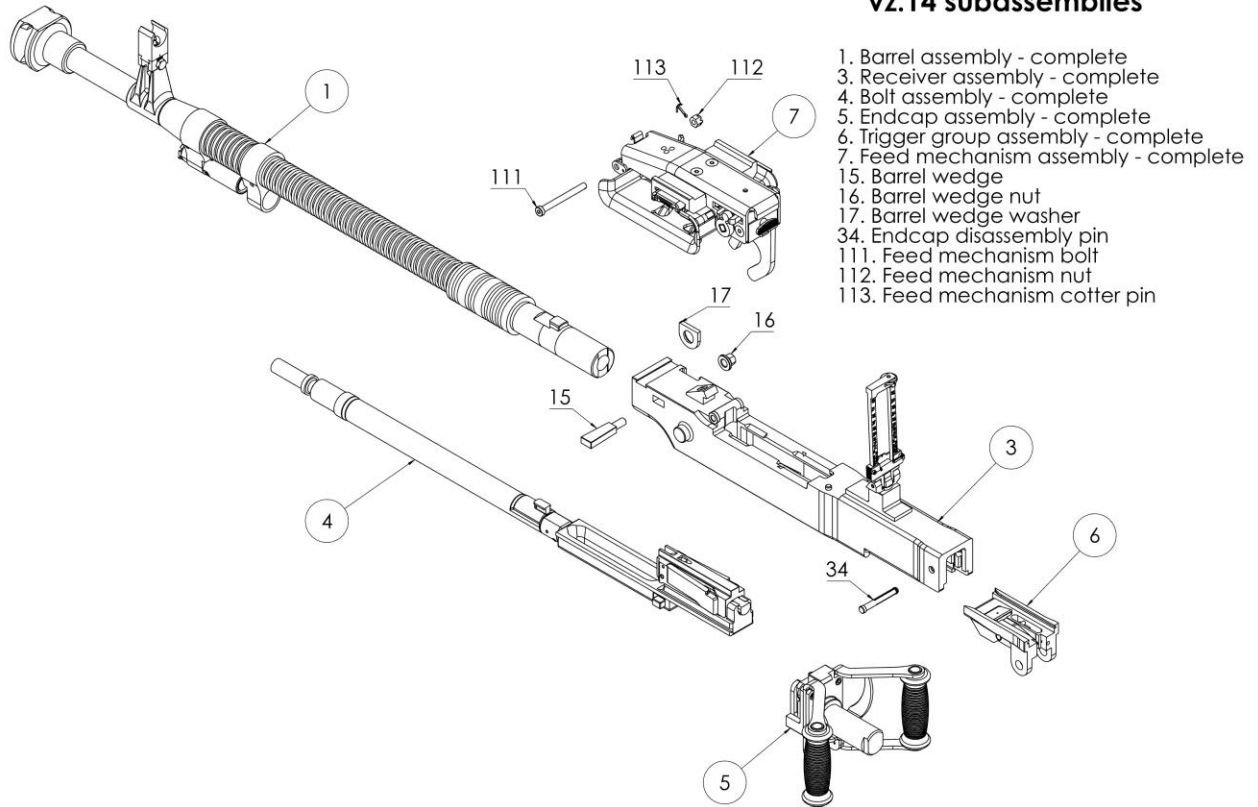
With armor piercing (AP) or armor piercing incendiary (API) ammunition on:

- Armored targets.....up to 500 m
- Air targets with armor thickness up to 15 mm.....up to 1500 m
- Artillery and machinegun posts.....up to 2000 m

Maximum effective range in general.....	3500 m
Maximum range.....	7000 m
Gun weight - empty.....	34 Kg
Belt box capacity.....	50 cartridges
Ammo belt weight - empty.....	1.30 Kg
Ammo belt weight - loaded.....	approx. 8 Kg
Belt box weight - empty.....	3.35 Kg
Belt box weight - loaded.....	approx. 11.35 Kg

Picture of parts disassembled.

12.7mm anti-aircraft HMG vz.14 subassemblies



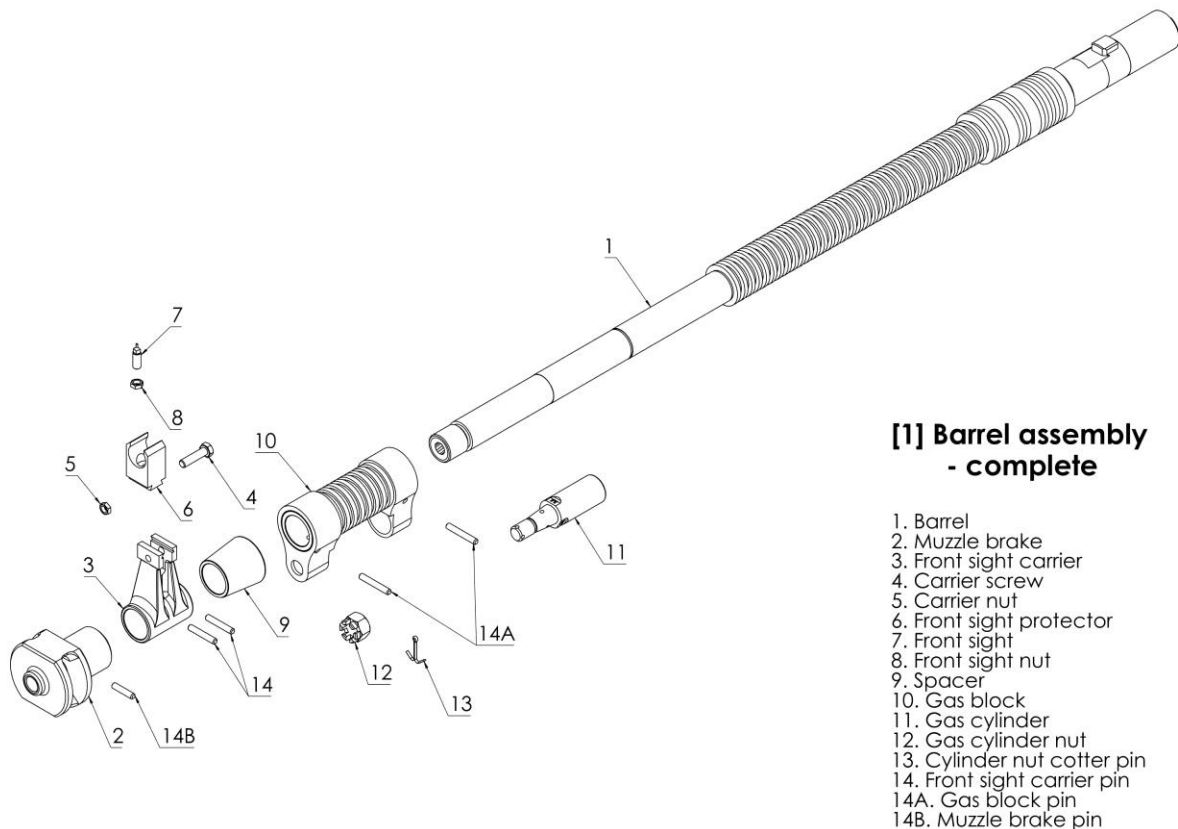
12.7x108mm Machine Gun

Description and Main characteristics

The DShKM heavy machine gun cal. 12,7x108mm is originally Russian production that replaced in army service older design heavy machine guns chambered for the same ammunition whereby now as a brand new modernized advanced version is under production in Slovak republic (EU) and offered as a portable or vehicle-mounted infantry support weapon. The DShKM is a gas operated, belt fed, air cooled machine gun that fires from an open bolt and in automatic mode only. The gas piston and chamber are located below the barrel; the gas piston is of the long stroke type and is attached to the bolt carrier. The gas chamber is fitted with a gas regulator, which requires a special wrench to make adjustments. The rear of the receiver houses two spring buffers, one for the bolt and one for the bolt carrier. The heavy barrel is finned for better cooling, and is fitted with a large muzzle brake. The barrel can be detached from the weapon and replaced quite fast and easily. The machine gun is chambered for 12,7x108mm ammunition and primarily designated for defeating the lightly armoured targets, fire installations and living force of enemy at the distance up to 1.500 – 2.000 m as well as for the defeat of slow-speed low-altitude air targets (helicopters, aircrafts, UAVs) at slant distances of up to 1.500 m.

12.7x108mm Machine Gun consists of # of main parts:

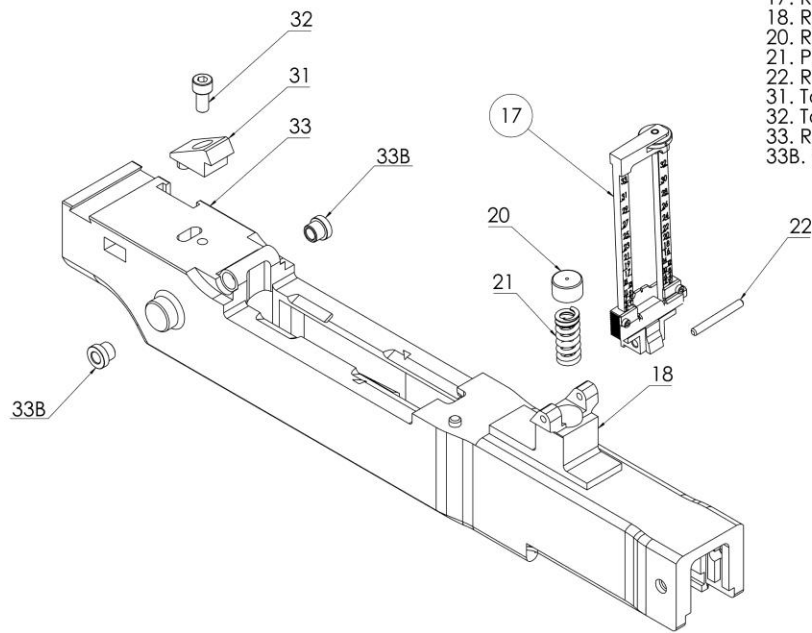
1. barrel – list of components



12.7x108mm Machine Gun

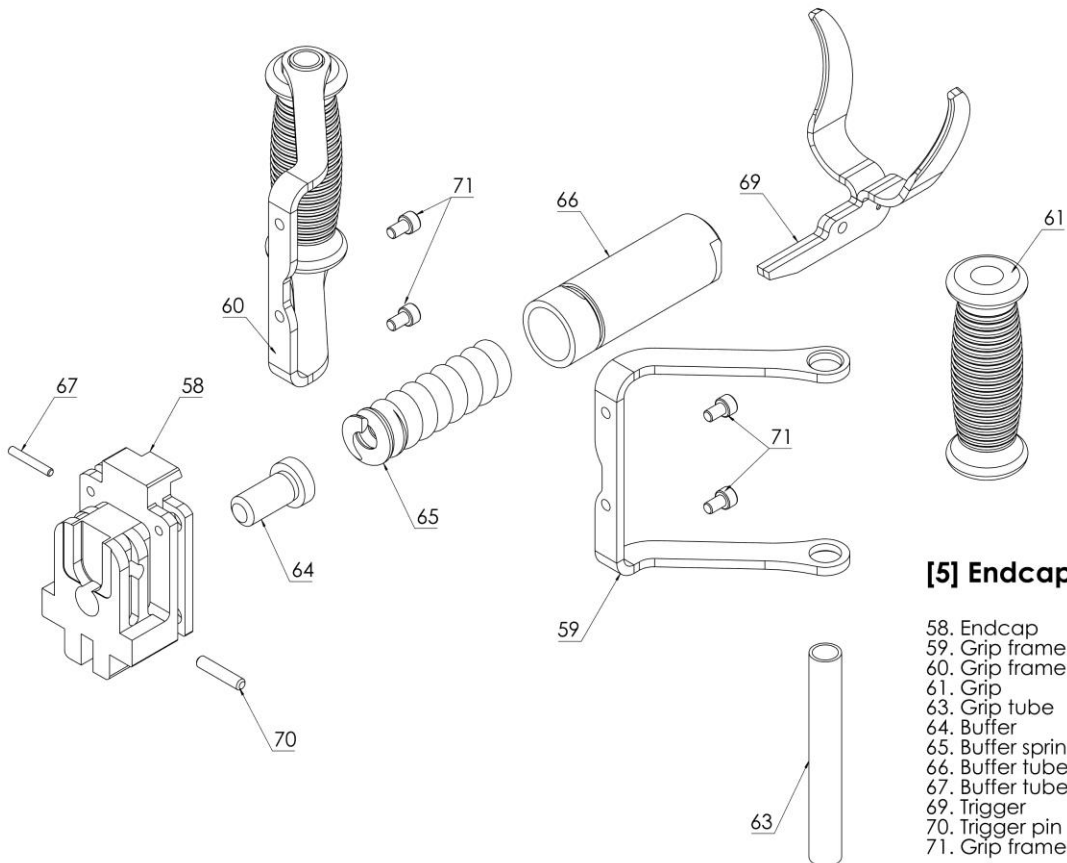
3. receiver – list of components

[3] Receiver assembly - complete



- 17. Rear sight
- 18. Rear sight base
- 20. Rear sight plunger
- 21. Plunger spring
- 22. Rear sight pin
- 31. Top cover catch
- 32. Top cover catch screw
- 33. Receiver
- 33B. Receiver bushing

5. lock of the action casing with the trigger and recoil buffer



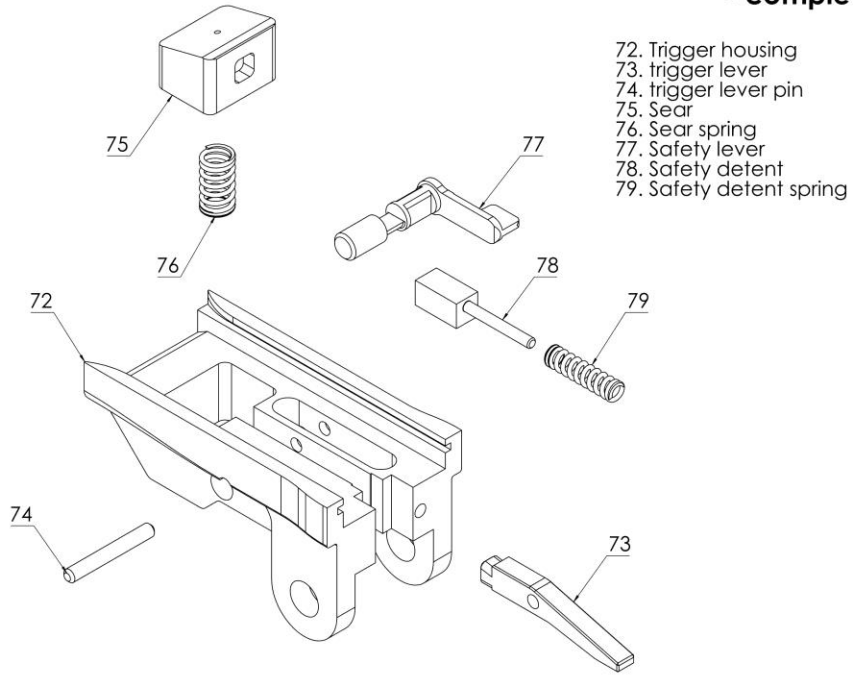
[5] Endcap assembly

- 58. Endcap
- 59. Grip frame - left
- 60. Grip frame - right
- 61. Grip
- 63. Grip tube
- 64. Buffer
- 65. Buffer spring
- 66. Buffer tube
- 67. Buffer tube pin
- 69. Trigger
- 70. Trigger pin
- 71. Grip frame screw

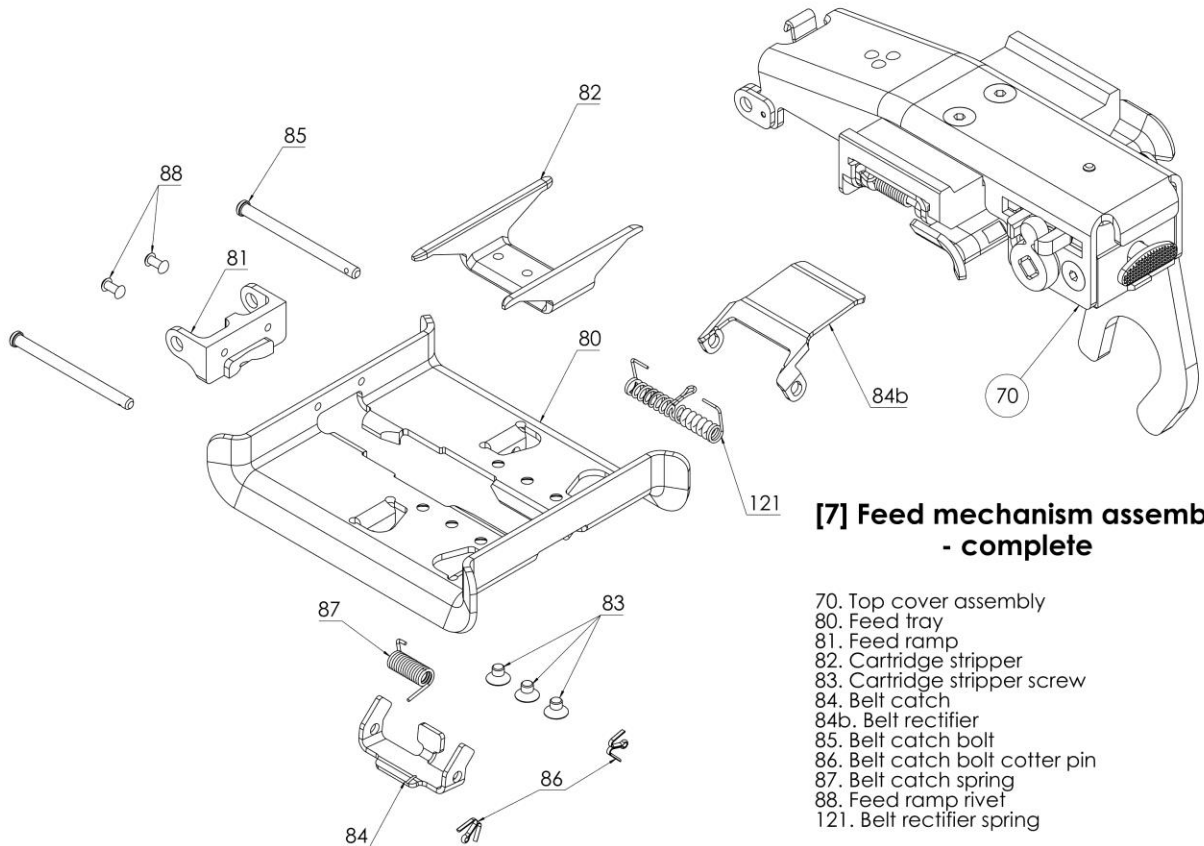
12.7x108mm Machine Gun

6.- trigger bracket with the catch of the bolt carrier + 7.- feeding mechanism

[6] Trigger group assembly - complete



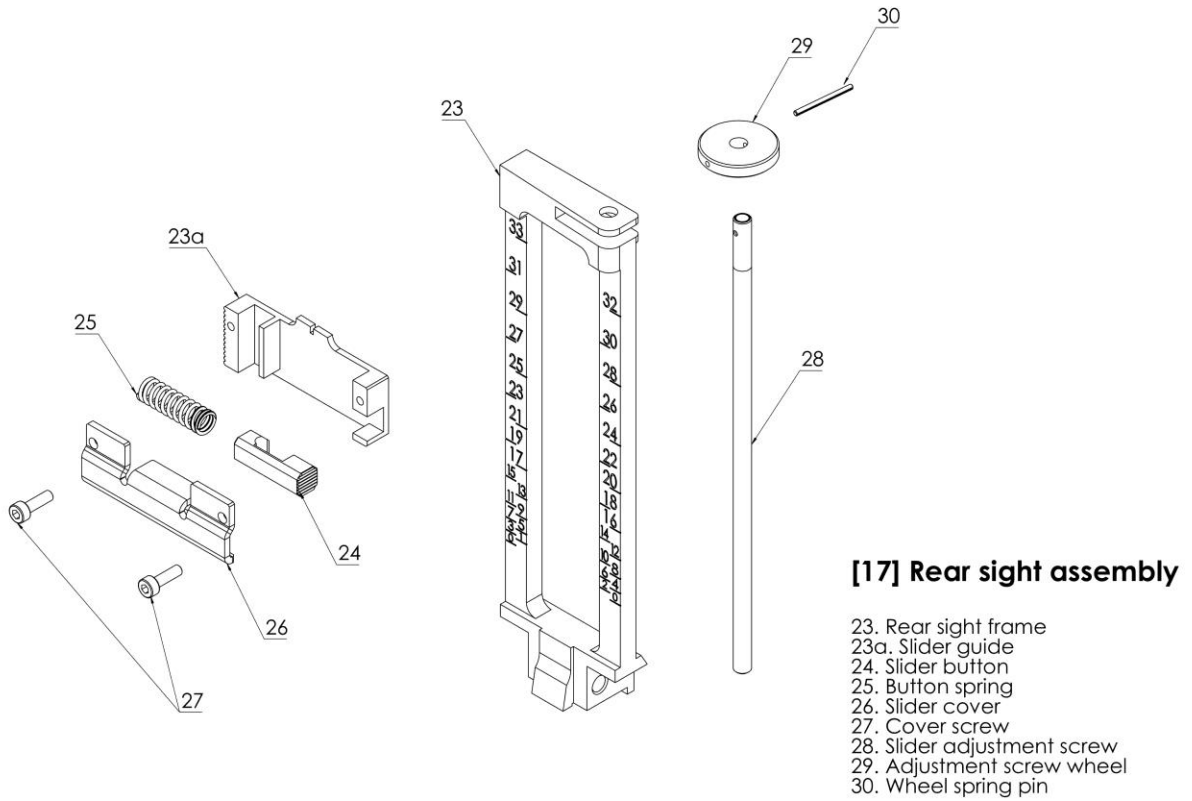
- 72. Trigger housing
- 73. trigger lever
- 74. trigger lever pin
- 75. Sear
- 76. Sear spring
- 77. Safety lever
- 78. Safety detent
- 79. Safety detent spring



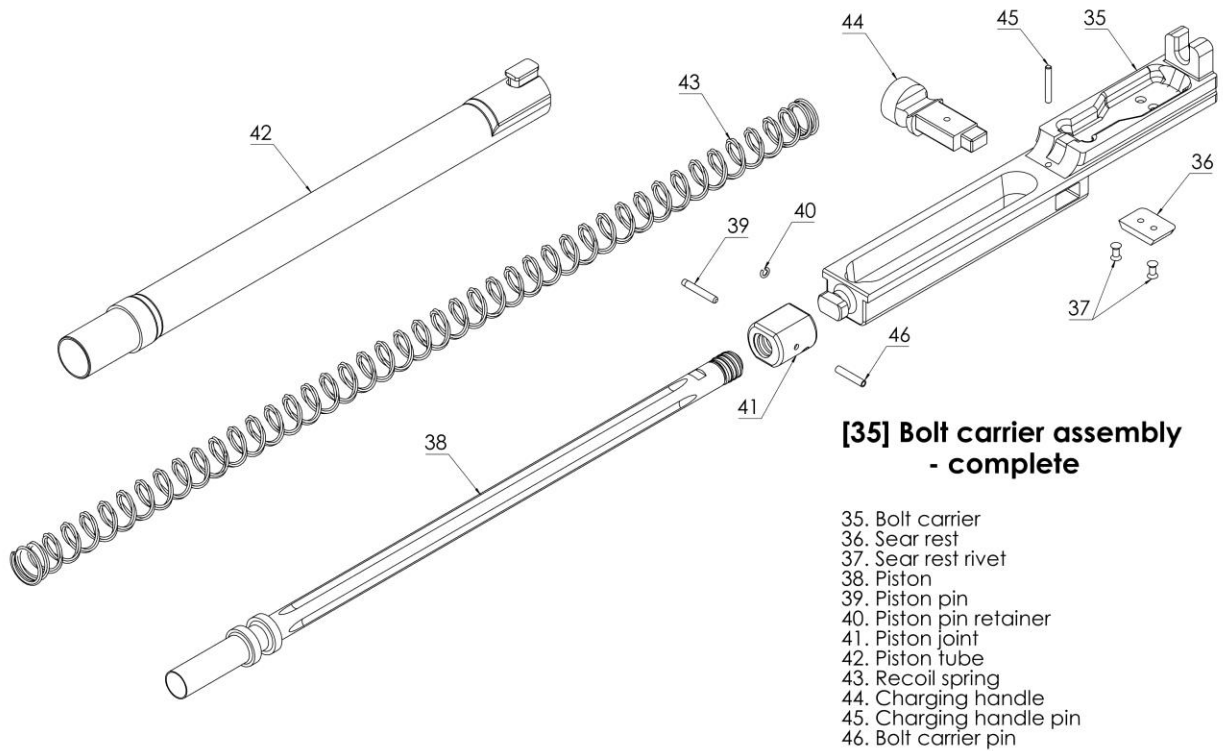
[7] Feed mechanism assembly - complete

- 70. Top cover assembly
- 80. Feed tray
- 81. Feed ramp
- 82. Cartridge stripper
- 83. Cartridge stripper screw
- 84. Belt catch
- 84b. Belt rectifier
- 85. Belt catch bolt
- 86. Belt catch bolt cotter pin
- 87. Belt catch spring
- 88. Feed ramp rivet
- 121. Belt rectifier spring

12.7x108mm Machine Gun

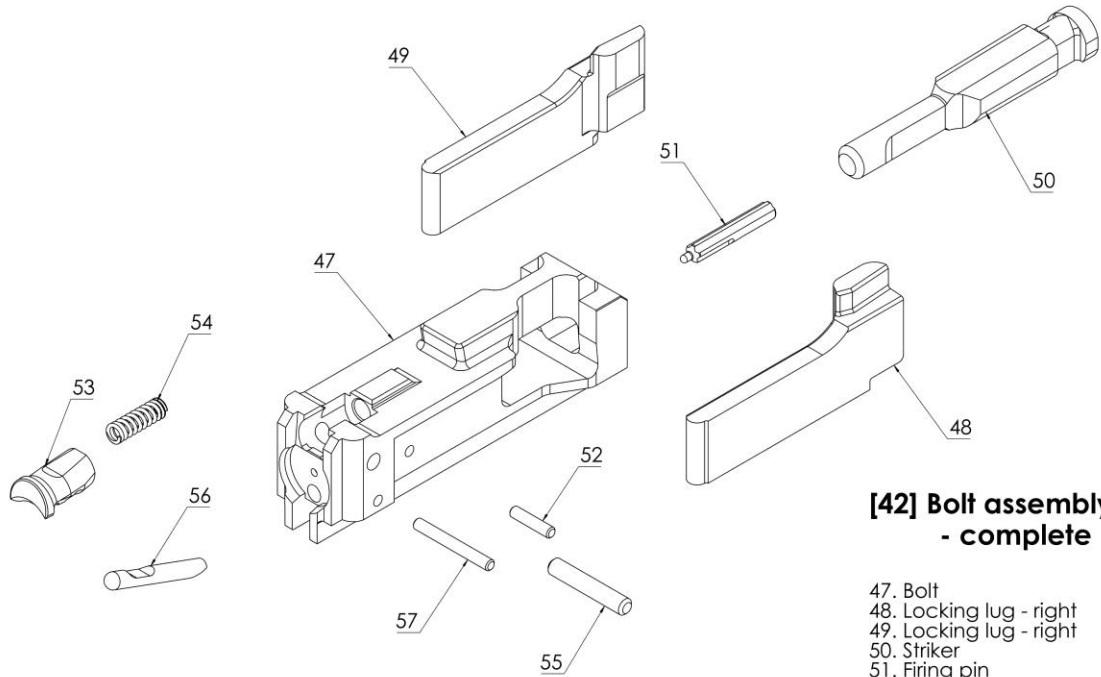


17.- rear sight + 35. – bolt carrier



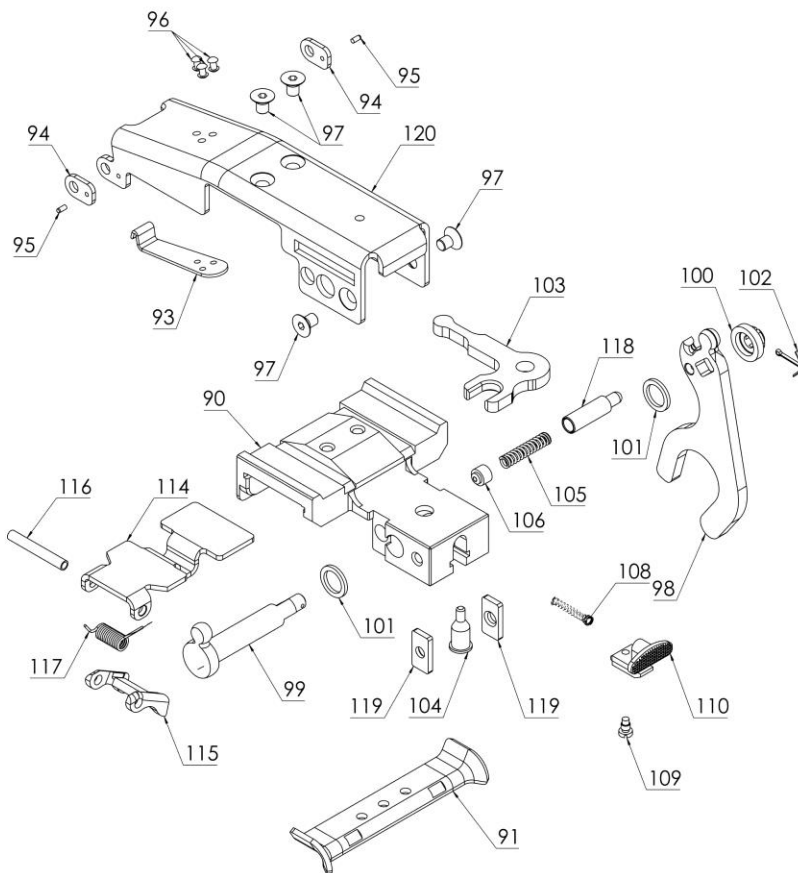
12.7x108mm Machine Gun

42. – bolt + 70. – feeding mechanism cover



[42] Bolt assembly - complete

- 47. Bolt
- 48. Locking lug - right
- 49. Locking lug - right
- 50. Striker
- 51. Firing pin
- 52. Firing pin retaining pin
- 53. Extractor
- 54. Extractor spring
- 55. Extractor pin
- 56. Ejector
- 57. Ejector retaining pin



[70] Feed mechanism top cover assembly

- 90. Feed slider guide
- 91. Belt guide
- 92. -
- 93. Top cover spring catch
- 94. Top cover pivot point stiffener
- 95. Stiffener index pin
- 96. Spring catch rivet
- 97. Slider guide screw
- 98. Driving lever
- 99. Driving lever bolt
- 100. Driving lever nut
- 101. Driving lever spacer
- 102. Driving lever nut cotter pin
- 103. Driven lever
- 104. Driven lever bolt
- 105. Driven lever detent spring
- 106. Lever detent spring rest
- 107. -
- 108. Top cover release button spring
- 109. Top cover release button screw
- 110. Top cover release button
- 114. Feeder slider
- 115. Cartridge feeder
- 116. Feeder pin
- 117. Feeder spring
- 118. Driven lever detent
- 119. Detent spring rest latch
- 120. Top cover base

12.7x108mm Machine Gun

Specifications

Calibre, mm	12.7
Cartridge, mm	12.7x108
Weight of the machine gun, kg	34
Weight of box with 50 rounds, kg	11.3
Weight of empty ammo box, kg	3
Weight of empty ammo belt (50 rounds), kg	1.2
Length of machine gun, mm	1625
Length of machine gun barrel, mm	1070
Rate of fire, rounds/min	560-600
Muzzle velocity, m/s	830-850
Aiming range shooting, m	3500
Maximum range, m	6500
System life, rounds	8,000

Pictures of Gun on Tripod (any tripod)



12.7x108mm Machine Gun

Inspections

No	Number of tested weapons	Inspection/Test types	Inspection/Test Conditions	Test criteria
INSPECTIONS				
1.	100%	Inspection of the weapon appearance	Visual inspection of the overall weapon as well as packaging and markings.	
2.	100%	Inspection of the main dimensions	Inspection of the main dimensions with universal measuring tools and gauges.	
3.	100%	Proper function of the firing mechanism	Dummy shells are used to examine function of the mechanism.	
4.	100%	Function	Each weapon is tested with live ammunition, # short and # long burst.	

Picture of box showing weights



PACKAGING

Packing Characteristics – MACHINE GUNS (weapon and spare barrel)	
Requirement	Packaging Information
Quantity of Guns + spare barrel in each wooden case	2 pcs HMGs+2 barrels.
Wooden Case Dimensions - L x W x H	120 x 40 x 43 cm
Wooden case Net/Gross weight	94 kg / 127 kg
Number of Wooden Cases per Pallet	6 pcs
Loaded Pallet Dimensions - L x W x H	120 x 80 x 138 cm
Number of Machine Guns with spare barrels per pallet	12 pcs
Gross Pallet Weight	782 kg

Packing Characteristics – TRIPOD (tripod and accessories)	
Requirement	Packaging Information
Quantity of Tripods in each wooden case	2 pcs.
Quantity of Ammo boxes with 50links belts in each wooden case	6 pcs.
Quantity of ZIP sets	2 pcs.
Each ZIP set includes	2 locking lugs, striker, firing pin, ejector, extractor, extractor spring, firing pin retaining pin, ejector pin, ejector retaining pin
Wooden Case Dimensions - L x W x H	120 x 80 x 60 cm
Wooden case Net/Gross weight	117kg / 195 kg
Weight of tripod, kg	45
Weight of empty ammo box, kg	3
Weight of empty ammo belt (50 rounds), kg	1.2
Number of Wooden Cases per Pallet	3 pcs
Loaded Pallet Dimensions - L x W x H	120 x 80 x 192 cm
Number of Tripods with accessories per pallet	6 pcs
Gross Pallet Weight	585 kg

Pictures of Exterior of Box and Interior of Box





Certification of WPM (wood packaging material)