



Type of vessel: Ex German Search and rescue cruiser registered in Togo as supply vessel.

Built: 1978 at FR Schweers, Bardenfleth a.d. Weser in Germany, renovated and refitted in Germany in 2000 at Lurssen Werft Bremerhafen (yard 6430) and in UAE in 2015 at Expert United Marine Services (yard 95). Hull: Alluminium.

Length: 44.20 meters (LPP 40.50 meters) / Beam: 8.05 meters / Draft: 2.80 meters

Displacement: 215 tonnes (light ship: 200 tonnes)

Tonnage: 283 Gross Tonnage and 85 Net registered Tonnage – certified by DBS.

Classification: Dromon Bureau Shipping (DBS)

Cruising speed: 13 knots. Maximum speed: 17 knots.

Main Engine: 2 x MAN Diesel type D2842 LE 410 EDC, 809 kW / 2100 rpm each on ZF BW gearbox and FP prop with about 10,800 running hours, totally refitted at 10,700 running hours by MAN Germany.

Bow Thrusters: one hydraulic bow thruster on starboard side main engine and 1 bow thruster on Electrical motor 75 Kw connected on Auxiliary engines.

Auxiliary Engines: 2 x LOVOL 1006 TWGM with STAMFORD UCM 224F generator at 125 KvA, with Electronic synchronization panel – About 500 running hours.

Daughter craft: “Rosie” built in 1978 at Schweers, Bardenfleth (yard 6430) Length: 8.80 meters, Beam: 2.70 meters, Draft: 0.90 meters – 14 knots. MAN Diesel type 0826 LE 40, 176 kW fitted in 2000, 13,000 running hours. Navigation Equipment: Koden MD 3604 radar, Sailor RT 2047 VHF, Koden KGP 97 GPS navigator, Simrad CP 33, SAAB R4 AIS, Navico GMDSS Axis 250 portable VHF, Sanshin HR 1012 Searchlight.

Engine Room equipment: Westfalia OTA2-00-066 fuel separator 2.5 kg/dm³, Bauer compressor, control panel for bilge/fire and typhoon, Haworthy super Trident STA purification plant for septic 1.74 m³/day (new in 2000), 3x Skylla TG50 Amp battery charger, Hot water boiler (new in 2015), fire pump 1580 m³/h for deck Canon (on starboard side with several outlet) on MITSUBISHI Diesel engine type S6B MTK2 (fitted in 2015).

Bunkers: Diesel: 60 Tons / waste oil: 900 liters / Lubrication oil: 1.4 m³ / Fresh water: 8.3 m³ connected with 2 x watermakers (250 liters/hour and 350 liters/ hours).

Navigation Equipment: Anschutz pilotstar D autopilot, Elac LAZ 5000 echo sounder with Elac DAZ 25 repeater, 2x Kelvin Hughes Nucleus 5000 A radar, Seahawk radar, 2 x radar transponder, 2 x GPS simrad GN33 plotter, Transas ECDIS Sailor 4000 Basic Unit with 3 display, Digital Gyro compass Anschutz 20/110-222 NG + one repeater, Magnetic compass Ludolph, 3 x VHF Sailor RT 2047, VHF Skanti DSC 3000, VHF Sailor DSC 6222, MF HF SSB Furuno FS 2575C, 2 x Alarm panel Mini C Sailor 6101, GMDSS VHF Sailor SP3520, 2 x GMDSS VHF Entel, SSAS Sailor S3027, 2 x Inmarsat C Message terminal Sailor 6006 with printer, 2 x GMDSS Sailor 6110, Navtex Furuno NX300, AIS transpondeur SAAB A4 (integrated with ECDIS unit), Flir camera M400X, EPIRB, 2 x SART, Digital Anemometer Simrad IS 15, BNWAS NAVGUARD.

Safety equipment: 2 x DSB LR 07 20 persons life raft, CO₂ fire extinguishing system in engine room, 25 fire extinguishers, Salvage pumps 40m³/h + 63 m³/h + 160 m³/h, Salvage inflatable bags, inflatable gangplank, several (extra) life jackets.

Deck Equipment: Crane 2T / 7 meters outlay, towing hook, 2 x Wiska searchlight on nflybridge + 1 seemats searchlight, decks lights, 2 T capstan and windlass foredeck, several towing lines.

General arrangement: Fore peak with Anchor chain boxes, storage for fire hoses and connection gear. Spacious bridge with steering control seat, navigator and radar station in the center and communication station at the rear. Ladder down to main lounge with seating for 18 people around two tables, TV, Fridge. Ladder down to lower deck with one single cabin and two double cabins. All cabins with sink, closet, desk, DVD player and TV.

On main deck aft lounge is a well-equipped galley, one single cabin with desk and sink, 2 toilets and shower, ventilation room with washing machine and storage, one walk in fridge food storage. On deck is large working space with deck crane with 4.7 meters Rhib with 40 hp outboard engine Yamaha.

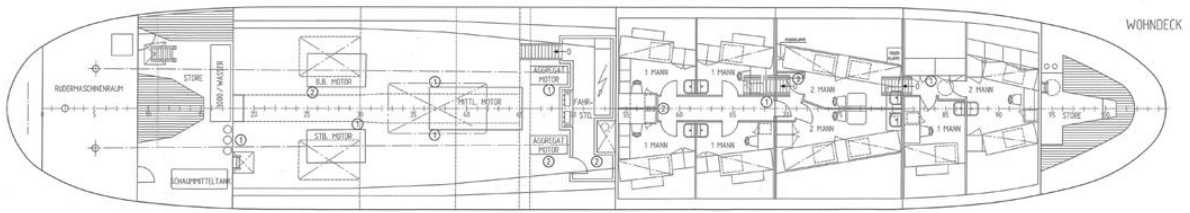
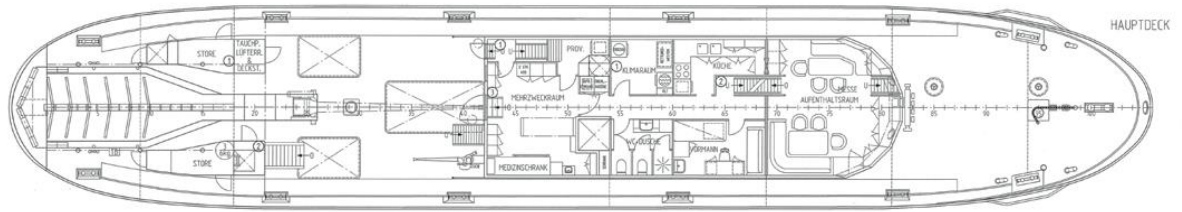
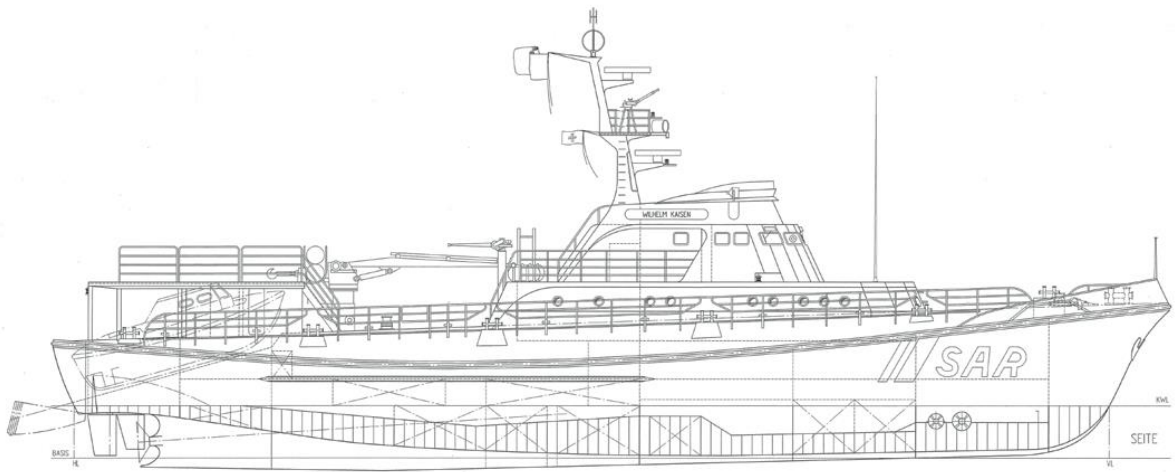
Aft on main deck is an advanced medical facility with fold out bed on top of freezers.

Lower deck is engine room and control room, with 2 double cabins and 4 single cabins (all with sink, desk and closet).

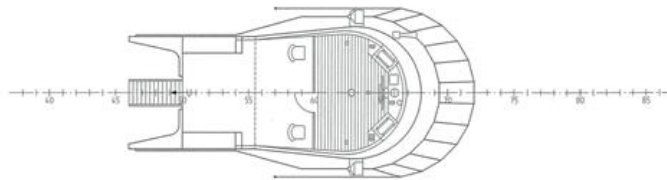
Aft is helicopter deck. Underneath is 4 storage compartments and daughter boat with control panel for hydraulic ramp and launching.

Classification: Dromon Bureau Shipping (DBS). Stability booklet issued in 2015. Last life raft survey in October 2015.

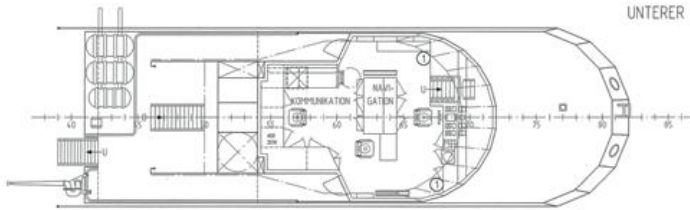
Postion: Dubai UAE.



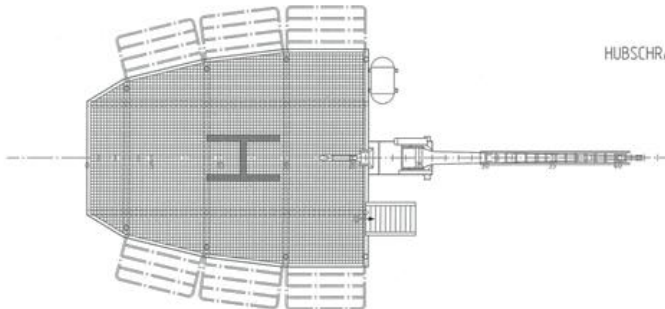
OBERER FAHRSTAND



UNTERER FAHRSTAND

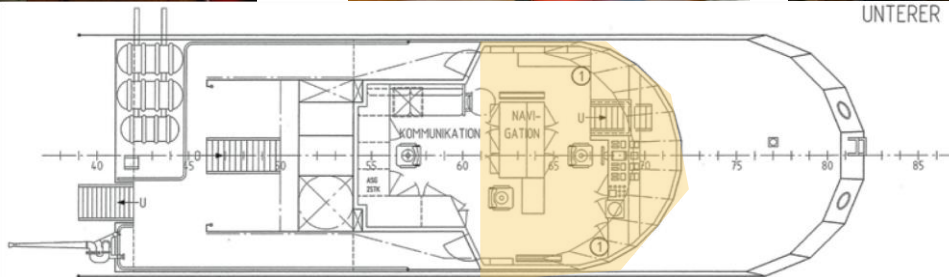


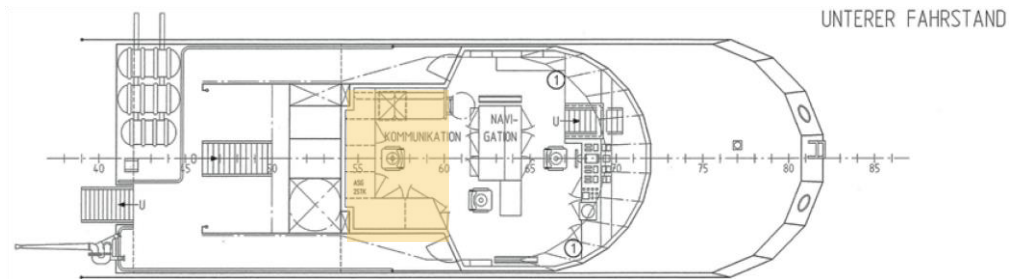
HUBSCHRAUBER-ARBEITSDECK

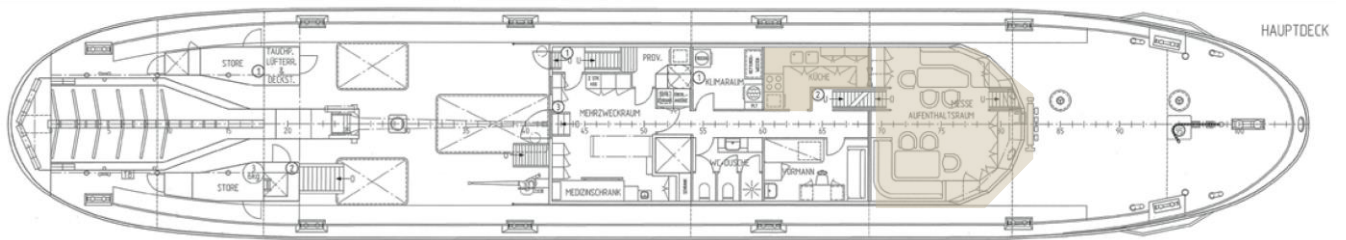


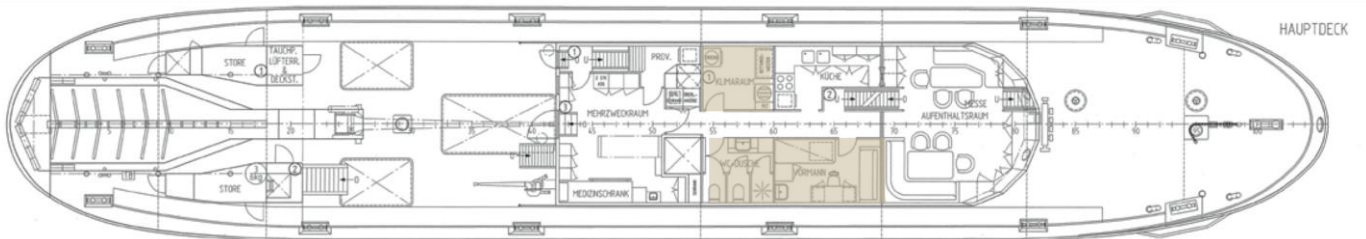


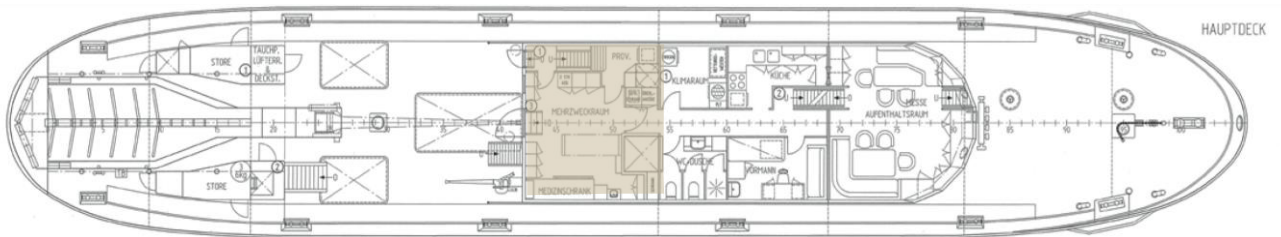
UNTERER FAHRSTAND

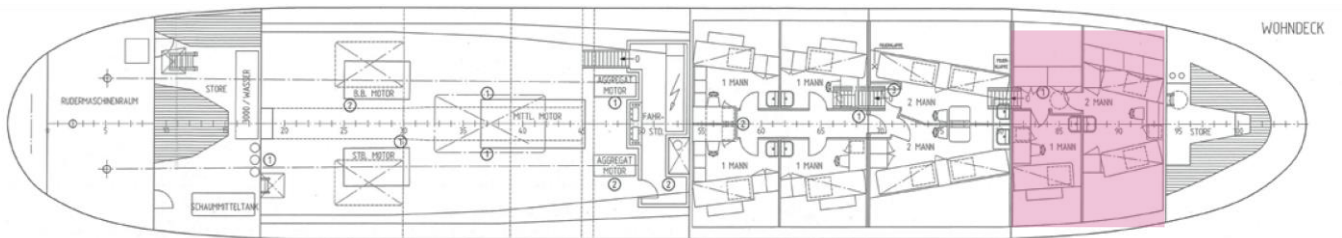


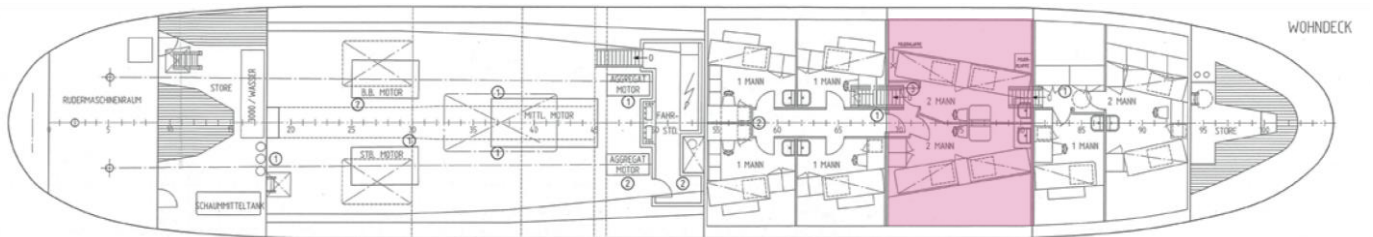


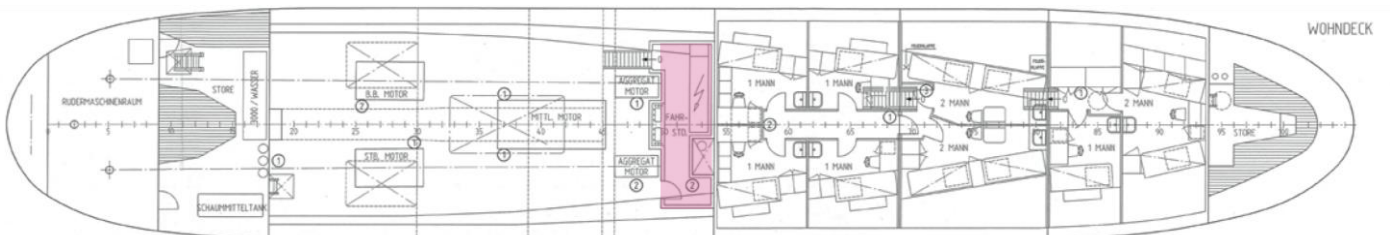


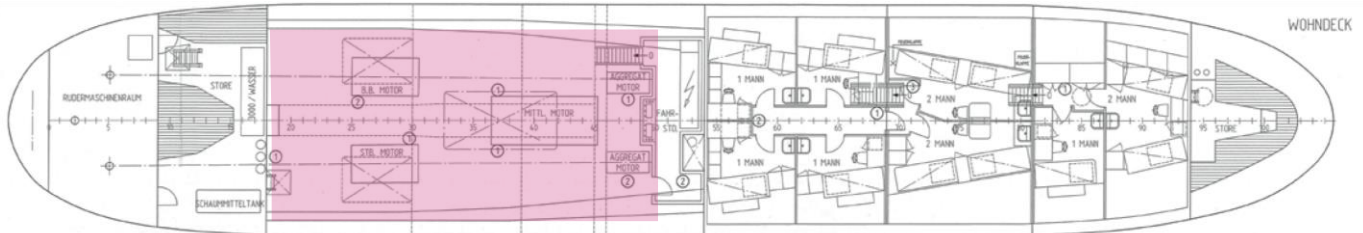
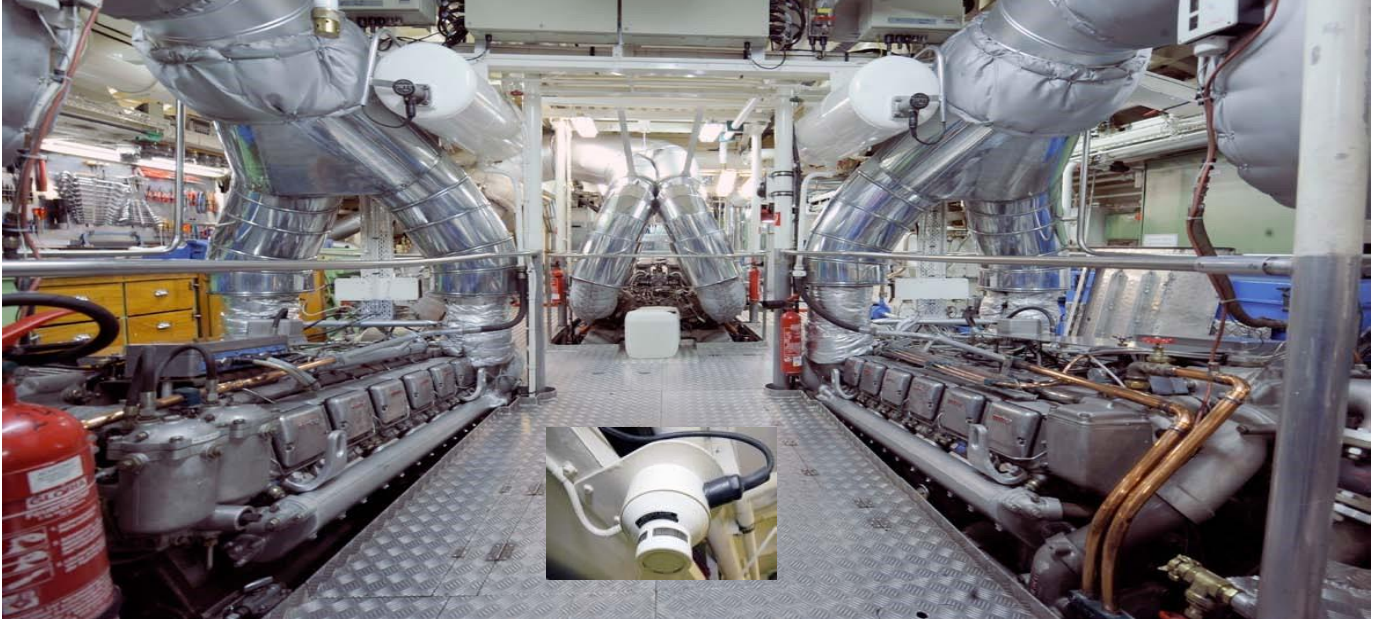


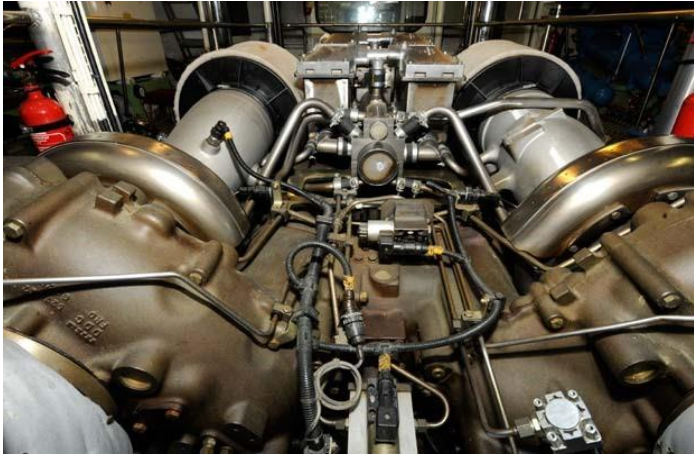


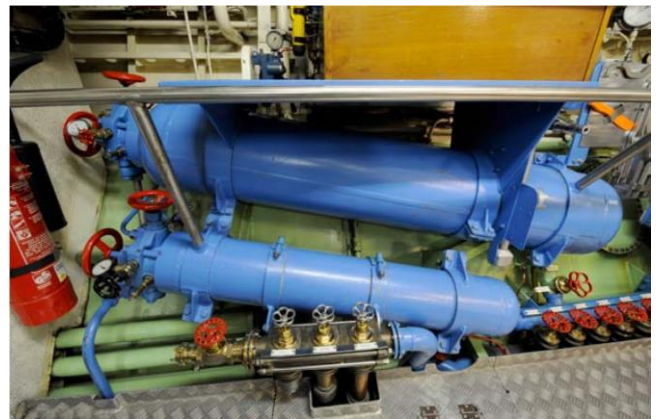
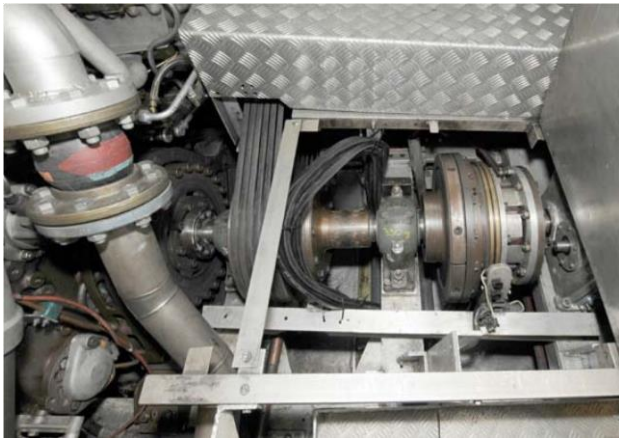
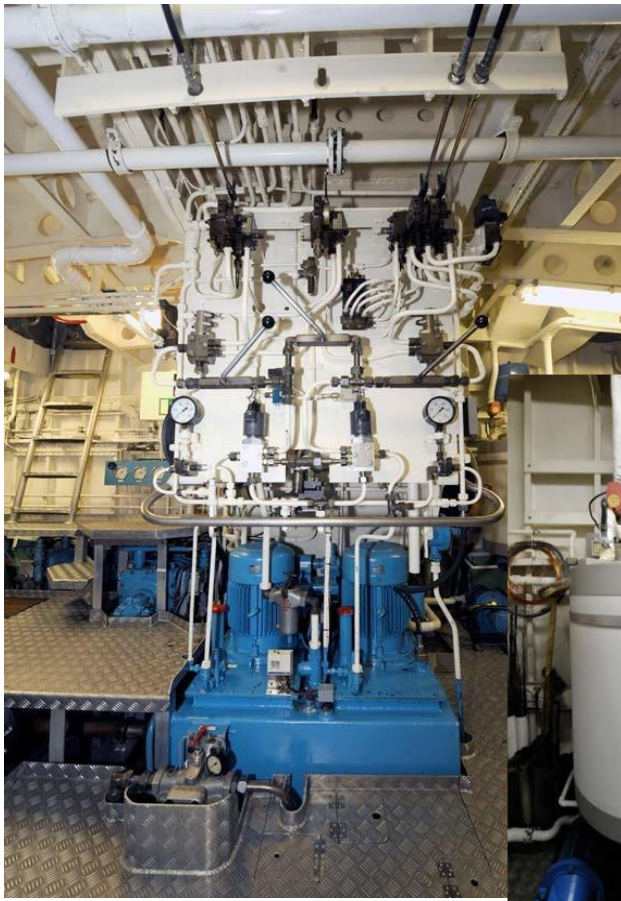


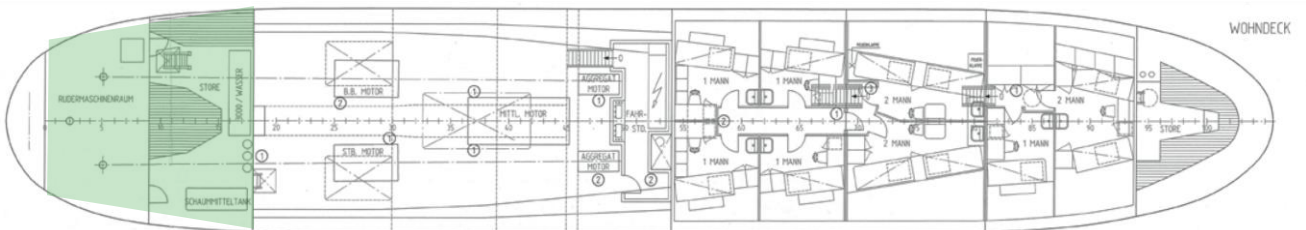






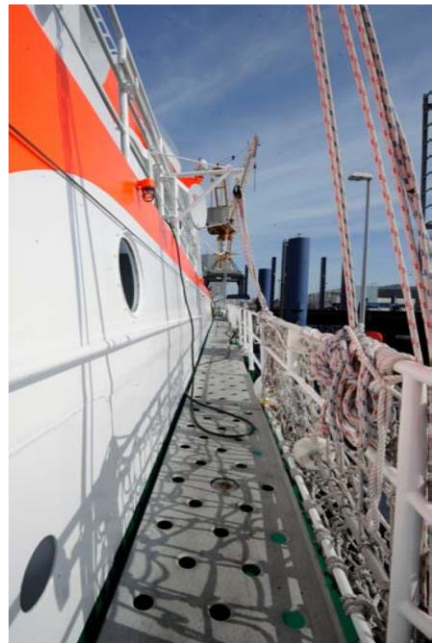




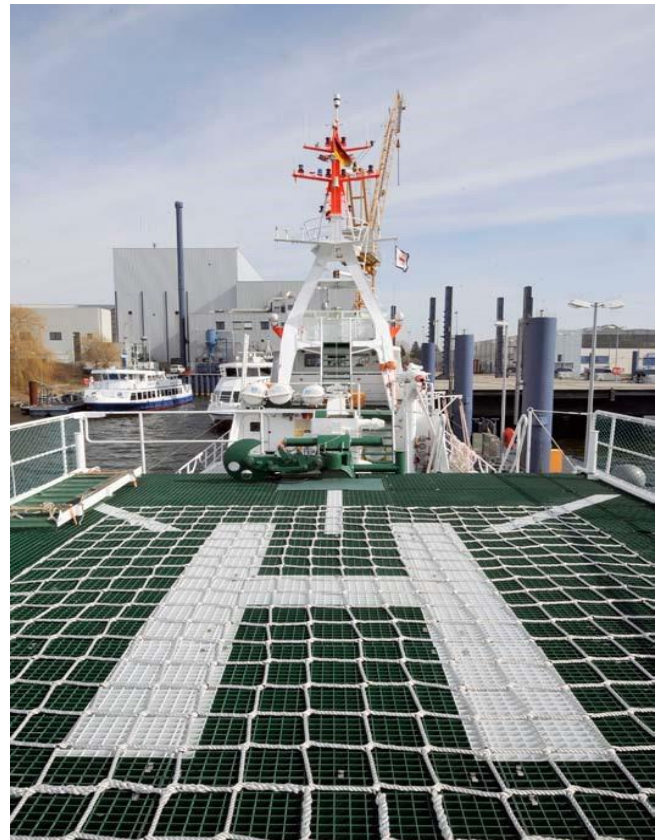












20

