

2.75" WEAPON SYSTEM MANUFACTURE & TOTAL SUPPORT

- 2.75 INCH ROCKET LAUNCHERS

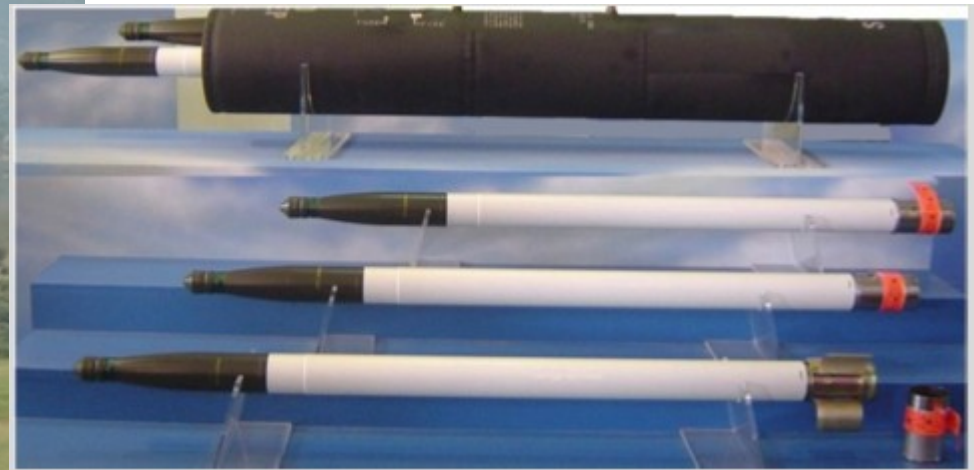
LAU SERIES

M260 / M261

- LAUNCHER TESTERS

- INTERVALOMETERS

- PRODUCTION



2.75 INCH ROCKET LAUNCHERS

LAUNCHER TYPE	USABLE ROCKET MOTORS	NUM OF TUBES	INTERVALO METER	SERVICE LIFE (ROCKET FIRINGS)	MAIN BODY LENGTH		OVERALL LENGTH		DIAMETER		MASS		NSN equivalent
					cm	inch	cm	inch	cm	inch	Kg	lbs	
LAU-68	MK4, MK40, MK66	7	IV-7	30	152	59.8	183	72,0	25.7	10,12	32	70.6	1340-00-599-7001
LAU-61	MK4, MK40, MK66	19	IV-19	30	127	50.0	197,5	77,8	41	16,14	60	132.5	1340-01-616-2977
LAU-131	MK4, MK40, MK66	7	IV-7	30	152	59.8	183	72,0	25.7	10.12	32	70.6	1340-01-230-5317
LAU-3	MK4, MK40	19	IV-19	1	127	50.0	197.5	77.8	41	16.14	60	132.5	1340-00-242-9824
M260	MK4, MK40, MK66	7	--	16	168.1	66.2	168.1	66.2	24.7	9.72	16,6	36.6	1055-01-070-9113
M261	MK4, MK40, MK66	19	--	16	168.1	66.2	168.1	66.2	40.32	15.87	39,46	87.1	1055-01-071-0064

2.75 INCH ROCKET LAUNCHERS

LAU-131, LAU-68 WITH 7 TUBES



2.75 INCH ROCKET LAUNCHERS

LAU-61, LAU-3 WITH 19-TUBES



INTERVALOMETERS

ElectroMechanical Intervalometers IV-7 & IV-9
for 7 and 19 tube launchers
LAU-3, LAU-61, LAU-68, LAU-131.

Both intervalometers are replacements of type 356AS172-1 Intervalometers.

INTERVALOMETERS	EQUIVALENT PN	FIRING POSITIONS	SERVICE LIFE(ROCKET FIRINGS)	NSN equivalent
IV-7	356AS172-1	7	30	1340-00-157-5917
IV-19	356AS172-1	10	30	1340-00-157-5917

INTERVALOMETERS

IV-7 & 1V-19

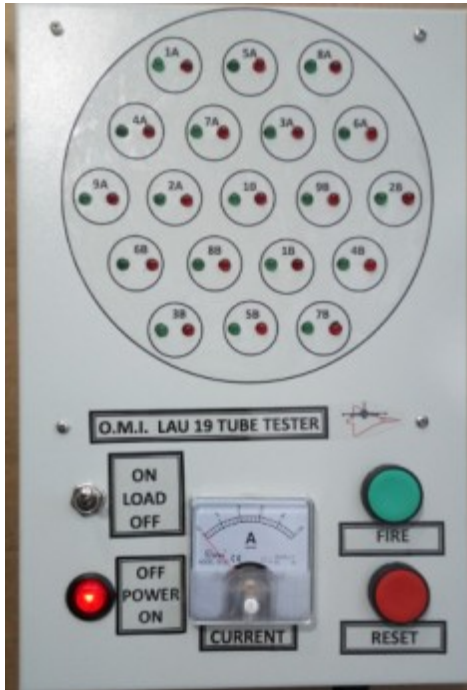


LAU TESTERS

T64 series testers suitable for 7 and 19 tube Launchers
LAU-3, LAU-61, LAU-68, LAU-131.

These testers provide overall test of the entire launcher including the integrated intervalometer.

LAU-61
LAU-3
TESTER



LAU-68
LAU-131
TESTER



LAU TESTERS

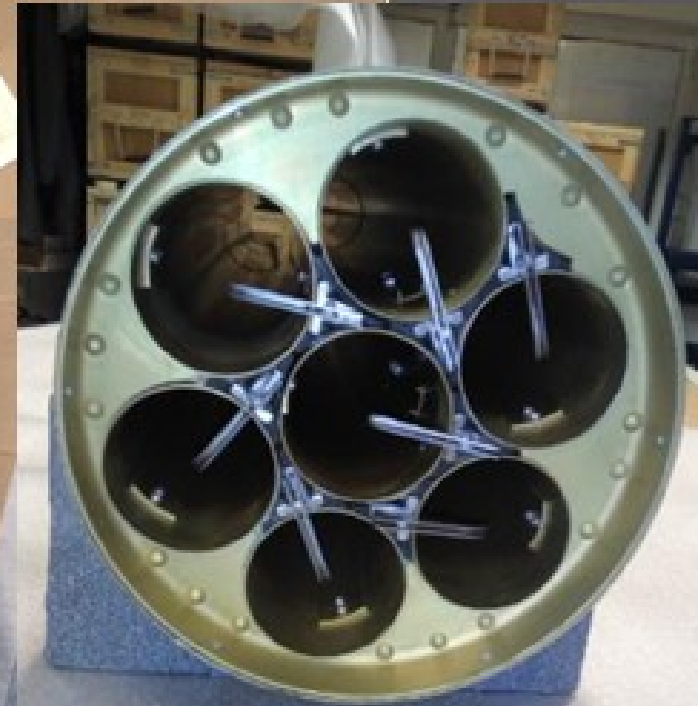
LAU-68
LAU-131
TESTER

LAU-61
LAU-3
TESTER



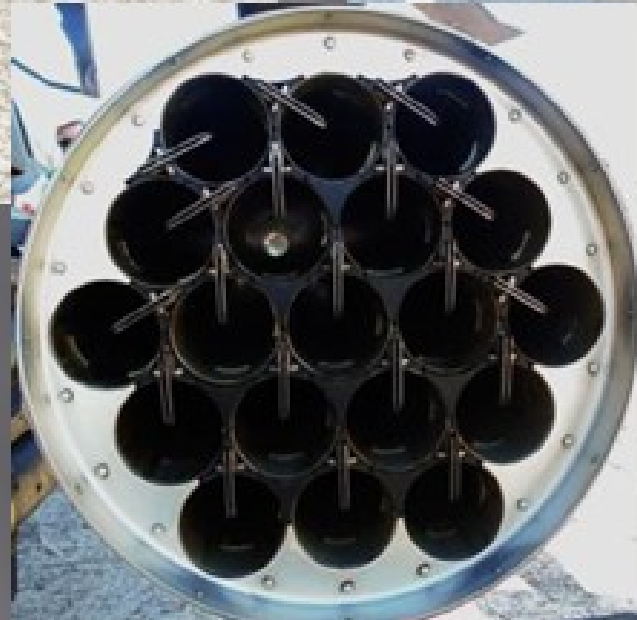
M260 LAUNCHER (7-tubes)

Light Weight Launcher for Helicopters only



M261 LAUNCHER (19-tubes)

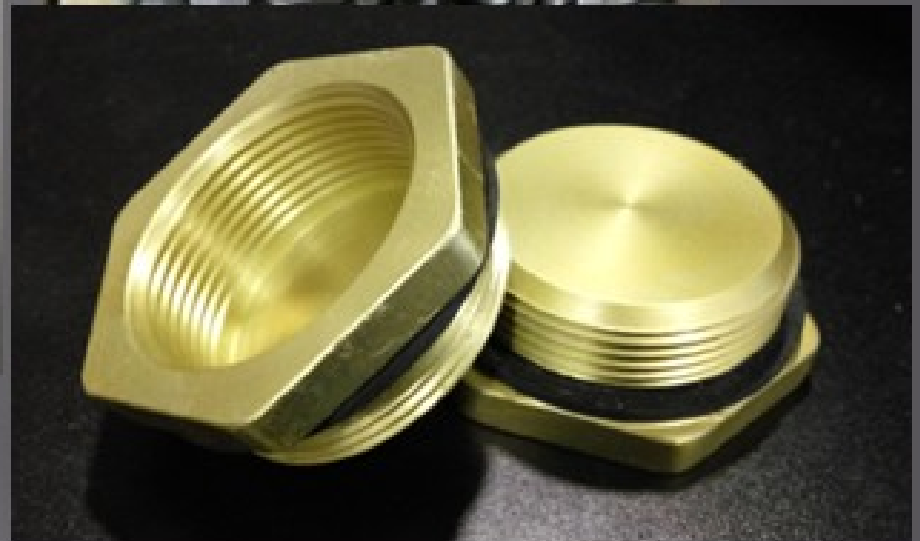
Light Weight Launcher for Helicopters only



LAUNCHER PRODUCTION GENERAL INFO

1. **Suspension lugs forging**
2. **Aluminum extrusion**
3. **Aluminum coating - anodizing**
4. **Metal parts machining**
 1. **Tube assembly**
 2. **Disks cutting**
 3. **Rings machining**
 4. **Firing Mechanisms**
 5. **LAU-61 / LAU-68 / LAU-131 Parts**
 6. **M260 / M261 Parts**
 7. **Rocket Stopper**
5. **AFT Fairing metal sheet lathe shaping**
6. **FWD Fairing composite material molding**
7. **Skin**
8. **Intervalometers**
9. **Tightening Straps & Spacers**
10. **LAU Assembly**
11. **LAU Acceptance – Testing – Inspection**
12. **Material Design Simulation & Testing**

1. Suspension Lugs Forging



2. Aluminium extrusion





3. Aluminum Coating - Anodizing



4.1. Metal Parts Machining – Tube Assembly



4.2. Metal Parts - Disks (Bulkheads) Machining

4.3. Metal Parts Machining – FWD & AFT Rings



4.4. Metal Parts Machining - Firing Mechanisms



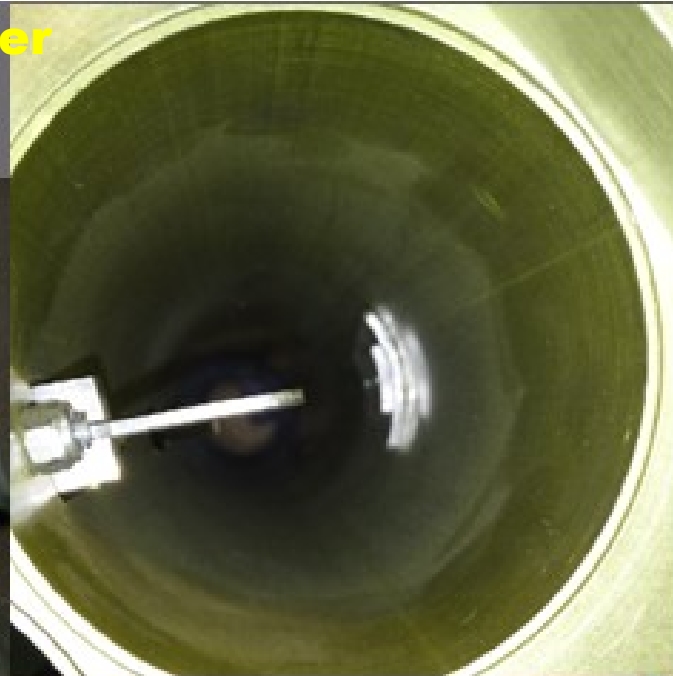


4.5. ASSEMBLY LAU-61

4.6. Metal Parts Assembly – M261 / M260

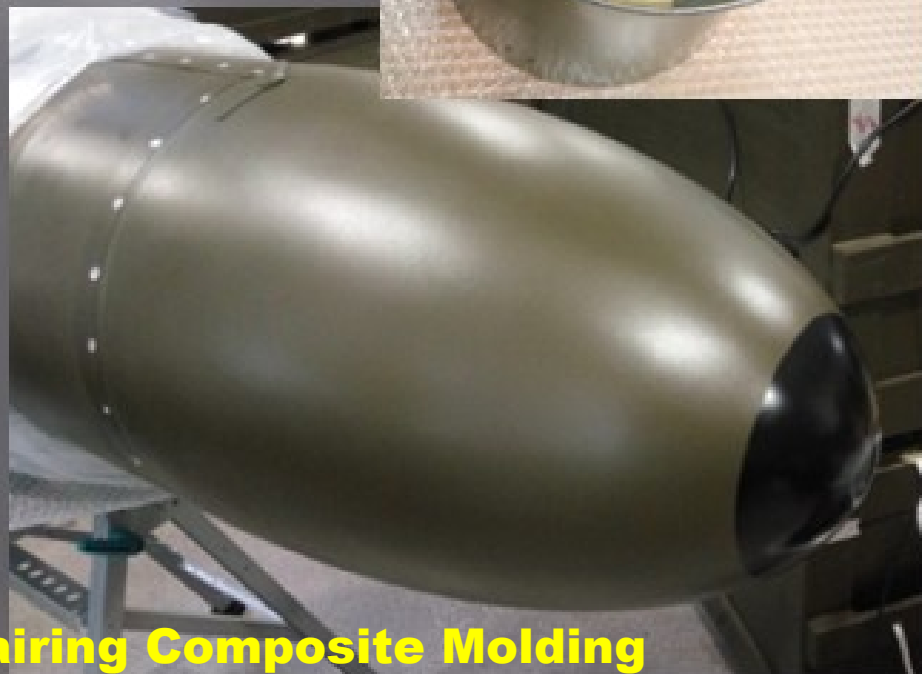


4.7. Metal Parts Machining _ Rocket Stopper



5. AFT Aerodynamic Fairing (Diffuser) Flow Forming





6. FWD Aerodynamic Frangible Fairing Composite Molding

7. Rocket Launcher External Skin



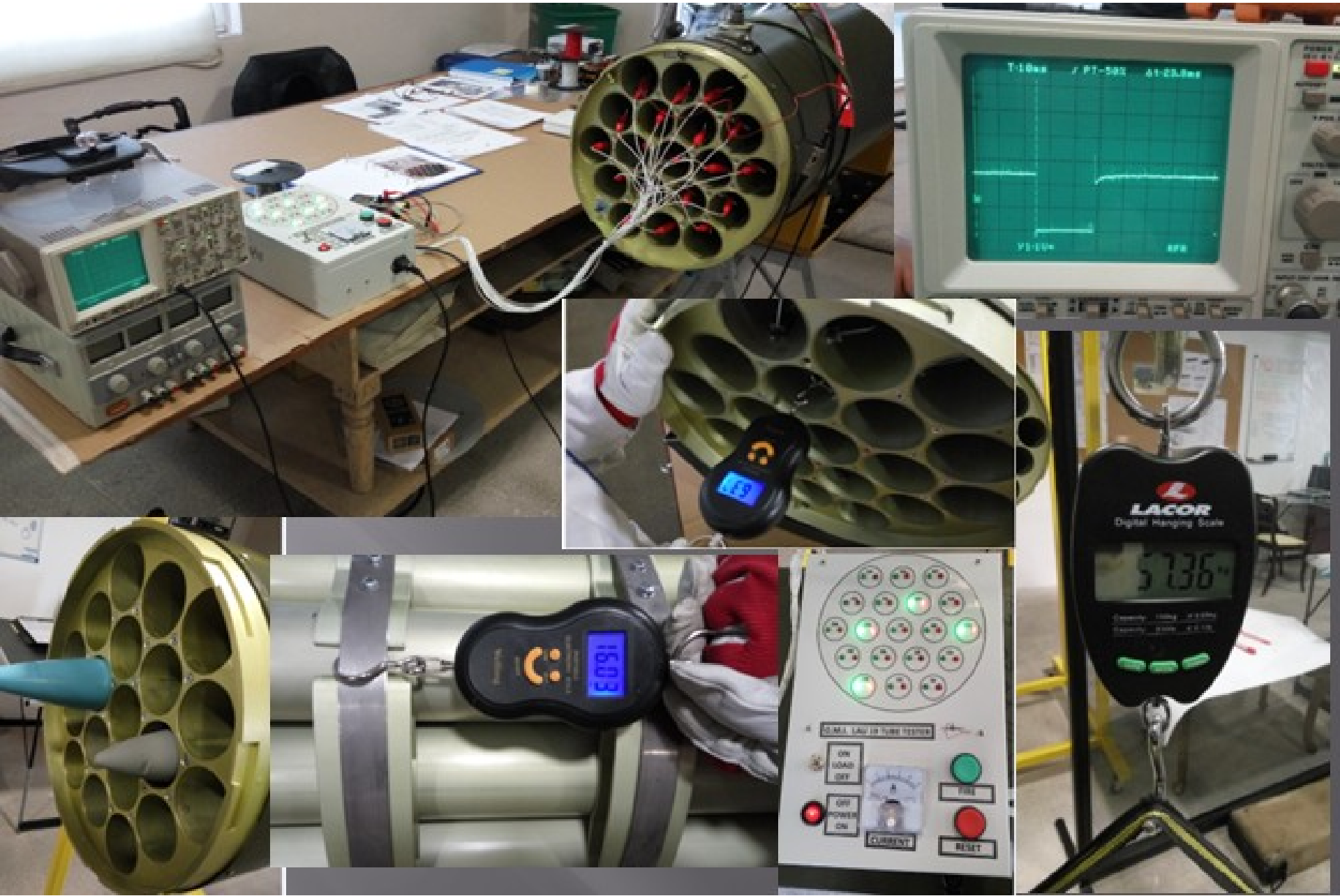
9. Tightening Straps & Spacers



10. LAU Assembly



11. LAU Acceptance Testing & Inspection



11. LAU Acceptance Testing & Inspection



